



# 6700 FALLBROOK AVENUE

West Hills, CA 91307

## MODERN OFFICE SPACE FOR LEASE



**LEE & ASSOCIATES**  
COMMERCIAL REAL ESTATE SERVICES

**JAY RUBIN**  
Principal  
818.223.4385  
jrubin@lee-re.com  
Lic # 01320005

**EUGENE KIM**  
Principal  
818.444.4919  
ekim@lee-re.com  
Lic # 01521416

No warranty or representation is made to the accuracy of the foregoing information. Terms of sale or lease and availability are subject to change or withdrawal without notice.





### PROPERTY DETAILS

**Lease Rate:** \$2.20 RSF Modified Gross  
Utilities included. Tenant is responsible for janitorial within premises.

**Parking:** 2.5/1000  
\$85 per car per month

### AVAILABILITY

SUITE	SQ. FT.	RATE	DESCRIPTION
222	±947	\$2.20 MG	Reception, 3 Offices
235	±1,440	\$2.20 MG	2 Window Offices 2 Interior Offices Bullpen, Storage
250	±1,425	\$2.20 MG	3 Offices, Kitchen, Bullpen
280	±980	\$2.20 MG	Reception, 3 Offices
290	±858	\$2.20 MG	2 Window Offices, Open Area

### PROPERTY HIGHLIGHTS

- Walking Distance to Restaurants, Starbucks & Retailers
- On Site Management
- Easy Access to 101 Freeway
- Ready to Move-In Office Space
- Beautifully Designed Common Areas
- AT&T Fiber Available



6700 Fallbrook Avenue  
West Hills, CA

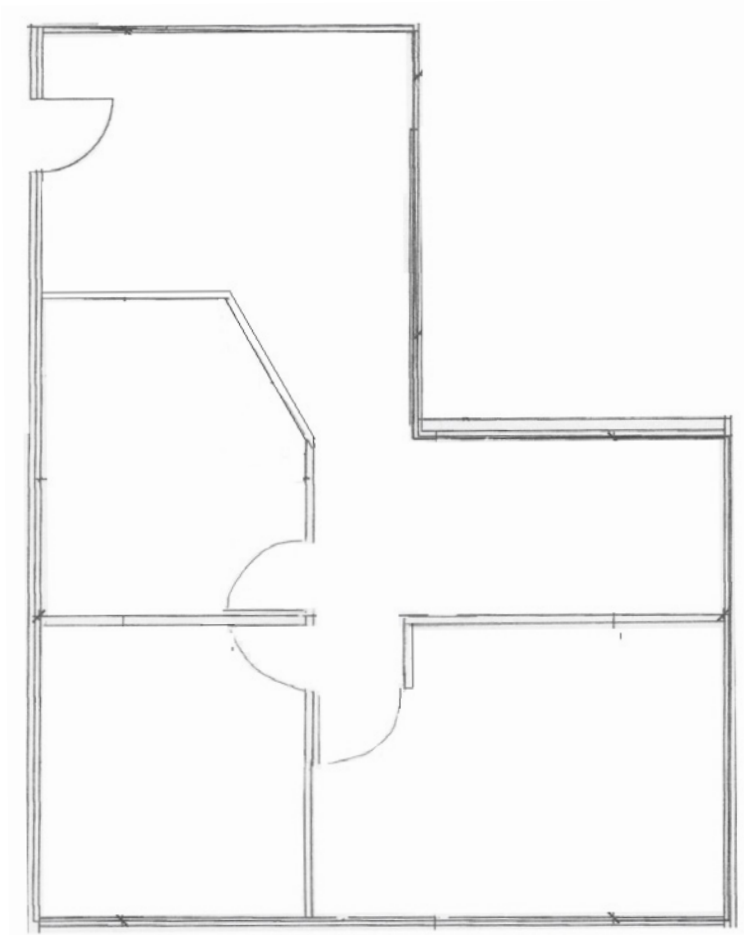
PRIME WEST HILLS  
OFFICE SPACE AVAILABLE FOR LEASE



6700 Fallbrook Avenue  
West Hills, CA

PRIME WEST HILLS  
OFFICE SPACE AVAILABLE FOR LEASE

FLOOR PLAN: SUITE 222 - 947 RSF



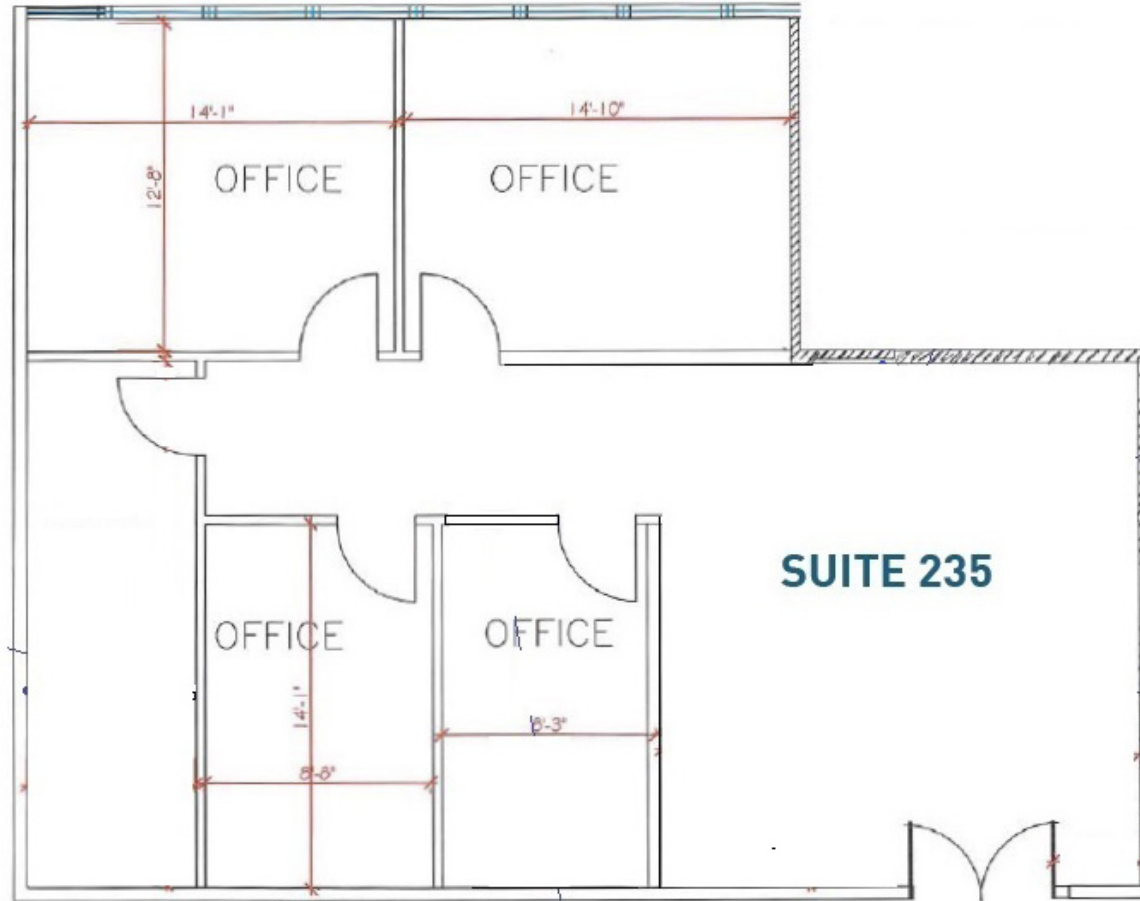
NOT TO SCALE



COMMERCIAL REAL ESTATE SERVICES

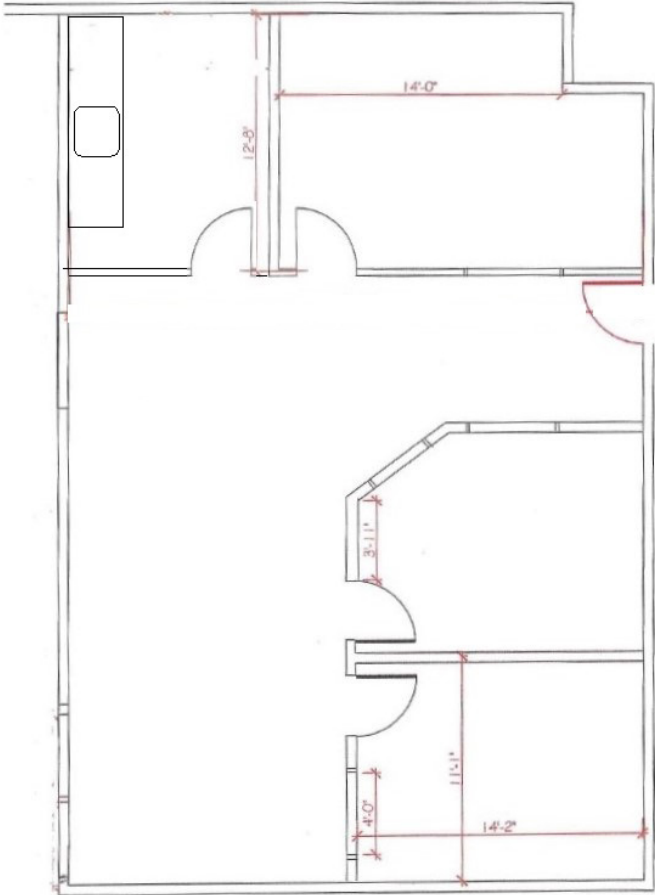
No warranty or representation is made to the accuracy of the foregoing information. Terms of sale or lease and availability are subject to change or withdrawal without notice.

FLOOR PLAN: SUITE 235 - 1,440 RSF



NOT TO SCALE

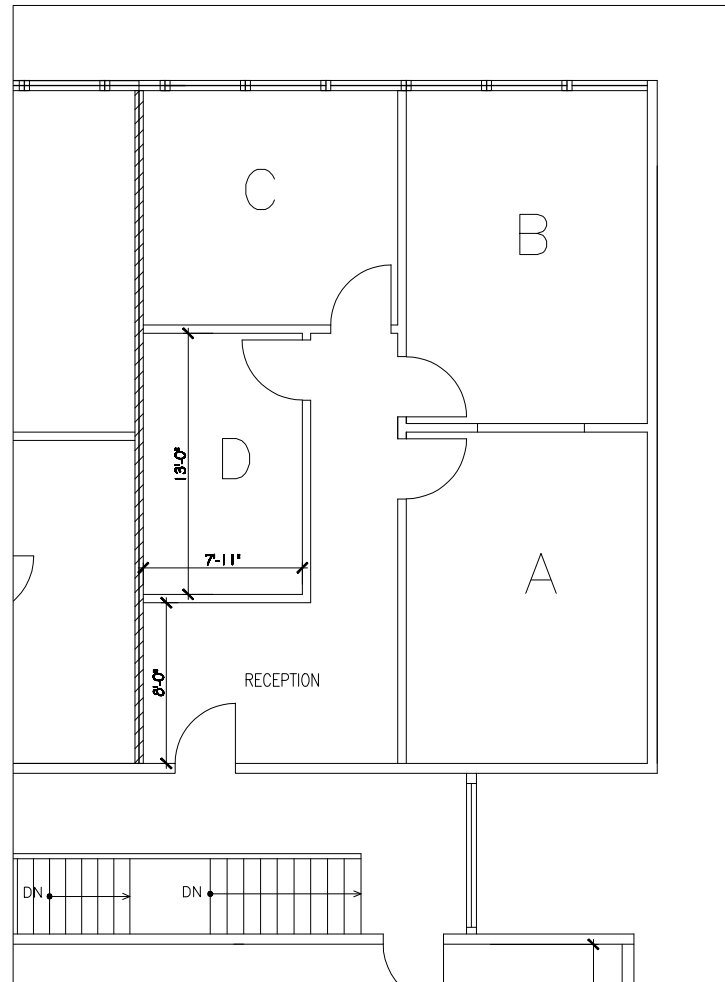
FLOOR PLAN: SUITE 250 - 1,425 RSF



NOT TO SCALE

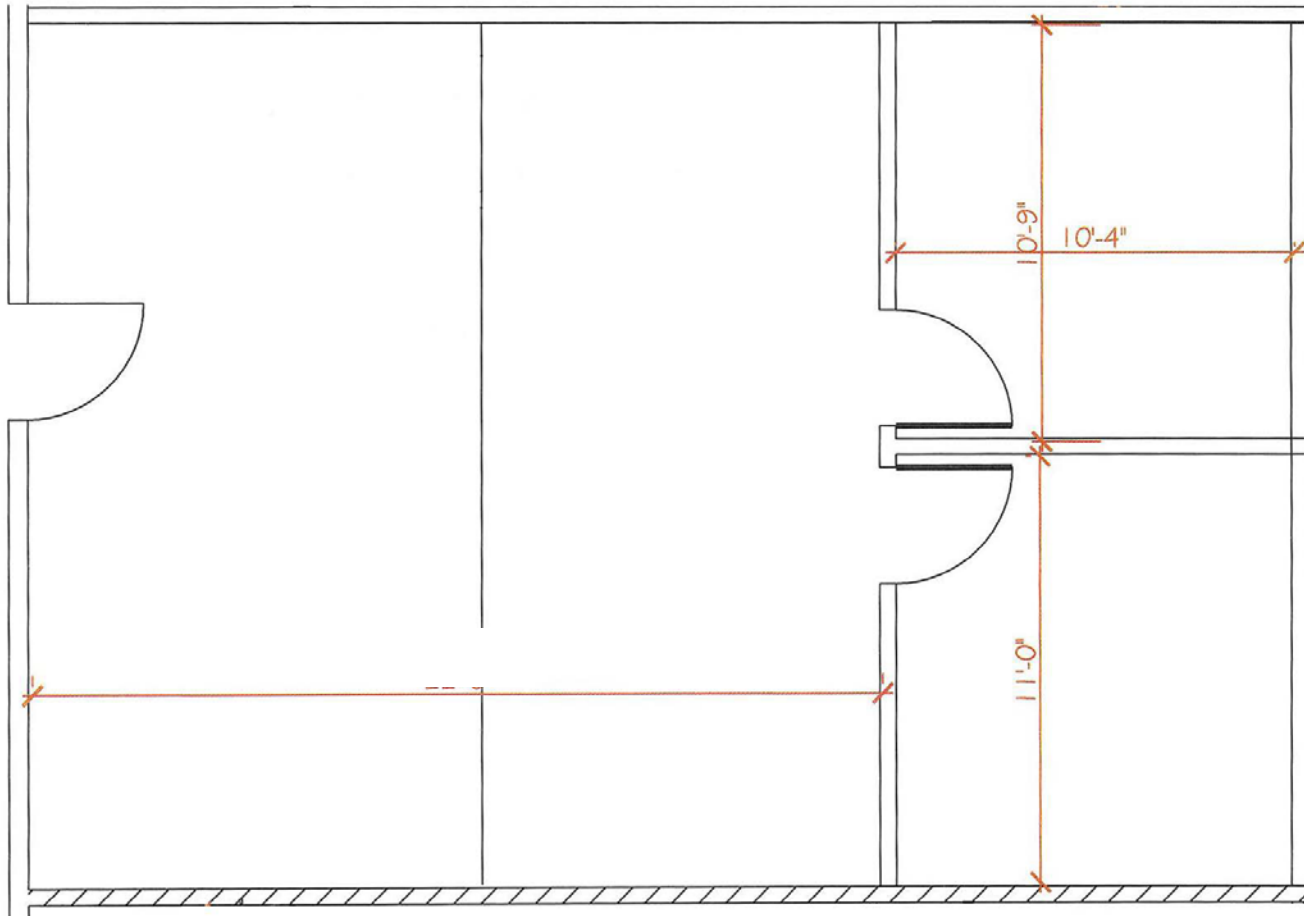


FLOOR PLAN: SUITE 280 - 980 RSF



NOT TO SCALE

FLOOR PLAN: SUITE 292 - 858 RSF



NOT TO SCALE



# 6700 Fallbrook Avenue West Hills, CA

# PRIME WEST HILLS OFFICE SPACE AVAILABLE FOR LEASE



For more information:

## Jay Rubin

Principal  
818.223.4385  
jrubin@lee-re.com  
DRE# 01320005

Website: [www.JayRubin-RE.com](http://www.JayRubin-RE.com)

## Eugene Kim

Principal  
818.444.4919  
ekim@lee-re.com  
DRE# 01521416

### ABOUT LEE & ASSOCIATES

Lee & Associates offers an array of real estate services tailored to meet the needs of the company's clients, including commercial real estate brokerage, integrated services, and construction services. Established in 1979, Lee & Associates is now an international firm with 70+ offices throughout the United States and Canada. Our 1,300 professionals regularly collaborate to make sure they are providing their clients with the most advanced, up-to-date market technology and information. For the latest news from Lee & Associates, visit [lee-associates.com](http://lee-associates.com) or follow us on Facebook, LinkedIn, Twitter, and Link, our company blog.



### COMMERCIAL REAL ESTATE SERVICES

Lee & Associates® - LA North/Ventura, Inc.  
Corporate ID #01191898  
A Member of the Lee & Associates®  
Group of Companies  
5707 Corsa Ave, Suite 200  
Westlake Village, CA 91362  
P:818.223.4388 F:818.591.1450  
No warranty or representation is made to the accuracy of the foregoing information. Terms of sale or lease and availability are subject to change or withdrawal without notice.

