

# VENTURE PLAZA

20720 VENTURA BOULEVARD • WOODLAND HILLS, CA

COMPLETELY RENOVATED BUILDING EXTERIOR & COMMON AREAS



**Creative Woodland Hills  
Office Space Available**

**JAY RUBIN**  
PRINCIPAL  
818.223.4385  
jrubin@lee-re.com  
DRE# 01320005

**EUGENE KIM**  
PRINCIPAL  
818.444.4919  
ekim@lee-re.com

 **LEE &  
ASSOCIATES**  
Corporate ID #01191898

[www.JayRubin-RE.com](http://www.JayRubin-RE.com)

No warranty or representation is made to the accuracy of the foregoing information. Terms of sale or lease and availability are subject to change or withdrawal without notice.

# VENTURE PLAZA

20720 Ventura Boulevard • Woodland Hills, CA

## Creative Woodland Hills Office Space For Lease



### PROPERTY DETAILS

Lease Rate: \$1.80 RSF Full Service Gross  
Parking: 3.0/1,000  
\$75 per car per month

### AVAILABILITY

SUITE	SQ. FT.	RATE	DETAILS
270	2,310 RSF	\$1.80 FSG	Available 12/31/2024

### PROPERTY HIGHLIGHTS

- Brand New Modernized Common Areas
- Completely Renovated Building Exterior & Landscaping
- On-Site Property Management
- Highly Improved Office Suites
- Efficient Floor Plans
- Balconies Available on Select Suites
- New Modernized HVAC Controls and System
- Easy Access to 101 Freeway

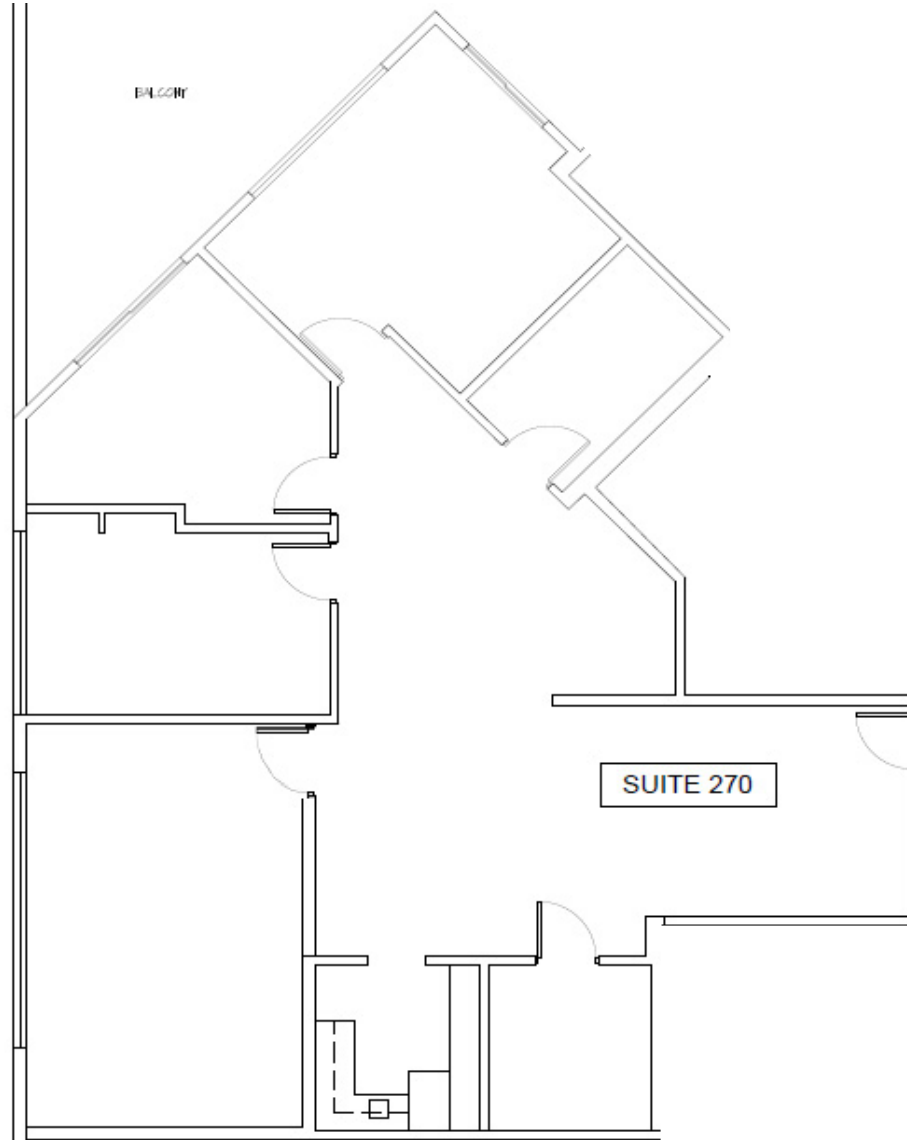


# VENTURE PLAZA

20720 Ventura Boulevard • Woodland Hills, CA

Creative Woodland Hills  
Office Space For Lease

## SUITE 270 FLOOR PLAN

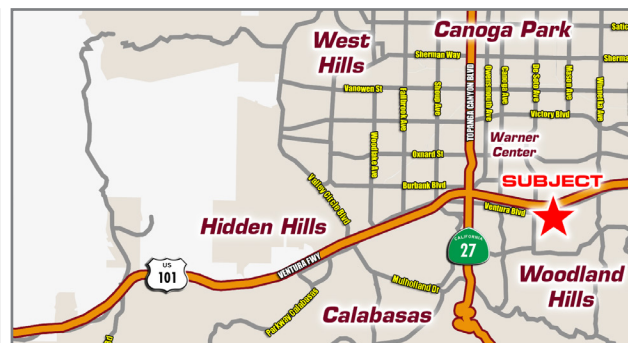


\*Not to scale

# VENTURE PLAZA

20720 Ventura Boulevard • Woodland Hills, CA

Creative Woodland Hills  
Office Space For Lease



## LEASING INFORMATION

**JAY RUBIN**

Principal

818.223.4385

jrubin@lee-re.com

DRE# 01320005

Website: [www.JayRubin-RE.com](http://www.JayRubin-RE.com)

**EUGENE KIM**

Principal

818.444.4919

ekim@lee-re.com

DRE# 01521416



**LEE & ASSOCIATES**

COMMERCIAL REAL ESTATE SERVICES

Lee & Associates® - LA North/Ventura, Inc.

Corporate ID #01191898

A Member of the Lee & Associates®

Group of Companies

5707 Corsa Ave, Suite 200, Westlake Village, CA 91362

P:818.223.4388 F:818.591.1450