

# 4730 WOODMAN AVENUE SHERMAN OAKS, CA



## Sherman Oaks Office Suites For Lease

JAY RUBIN  
PRINCIPAL  
818.223.4385  
jrubin@lee-re.com  
BRE# 01320005  
[www.JayRubin-RE.com](http://www.JayRubin-RE.com)

JENNIFER DONALDSON  
PRINCIPAL  
818.933.0347  
jdonaldson@lee-re.com  
BRE# 01317737

 LEE &  
ASSOCIATES

Corporate ID #01191898  
No warranty or representation is made to the accuracy of the foregoing information. Terms of sale or lease and availability are subject to change or withdrawal without notice.



## PROPERTY DETAILS

Lease Rate: \$2.65 PRSF Full Service Gross

**Parking:** \$65 Per Car/Month

## PROPERTY HIGHLIGHTS

- Modern Renovations
- Highly Improved Suites
- Easy Access to 405 & 101 Freeways
- Excellent Window Line
- On-Site Property Management
- Parking Attendant
- AT&T Fiber Available

## LAST REMAINING AVAILABILITY

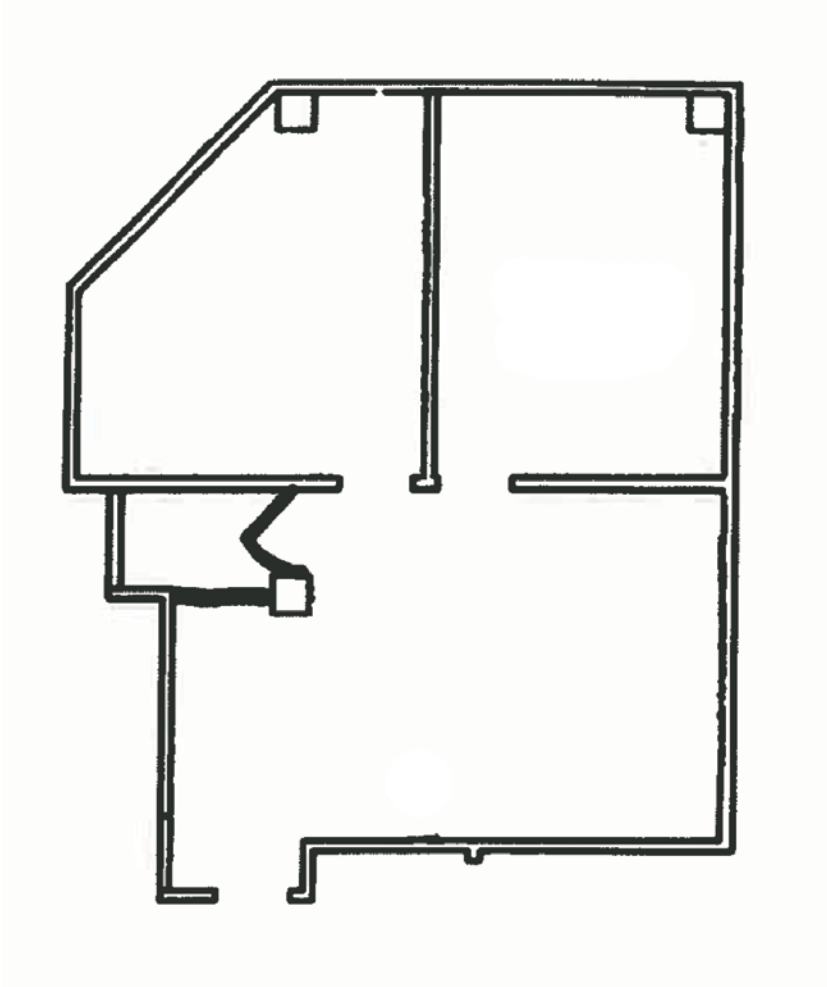
SUITE	SQ. FT.
300	923 RSF
302	1,349 RSF

4730 WOODMAN AVENUE  
Sherman Oaks, CA

Sherman Oaks  
Office Space For Lease

FLOORPLAN

SUITE 300  
923 SQ FT.



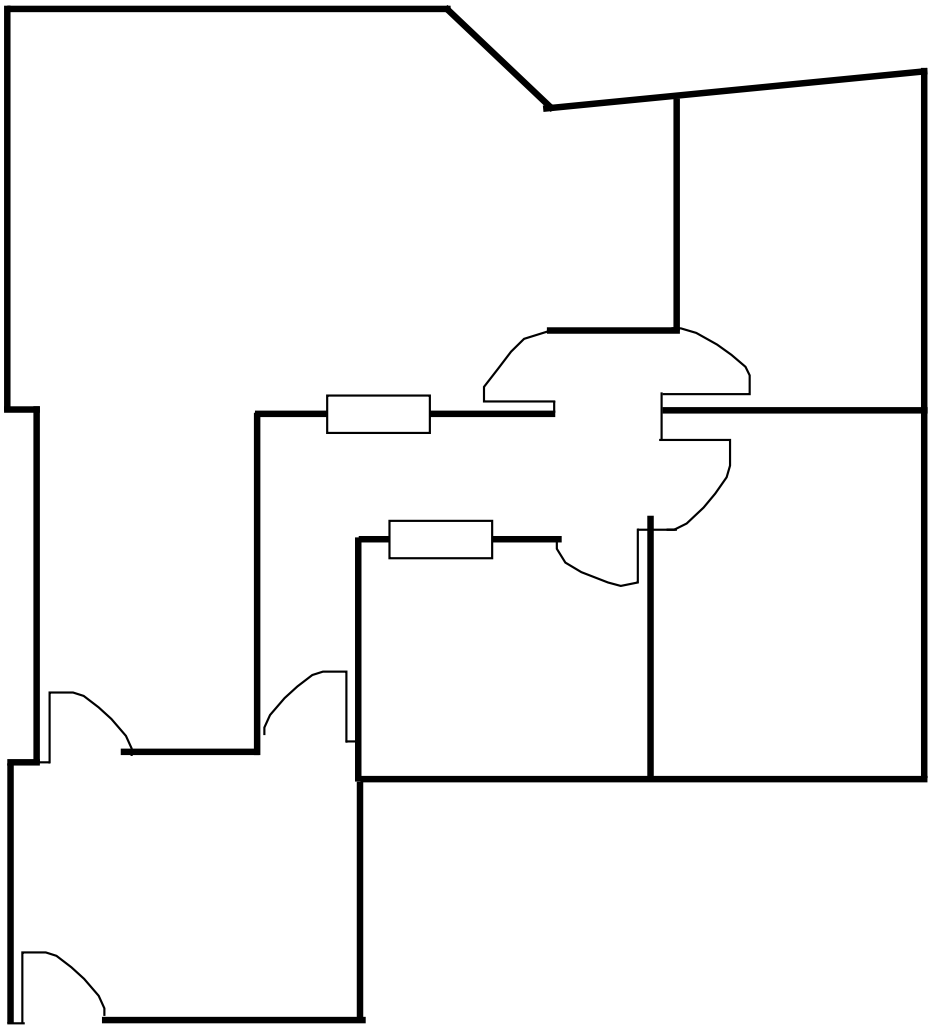
\*Not to scale

4730 WOODMAN AVENUE  
Sherman Oaks, CA

Sherman Oaks  
Office Space For Lease

FLOORPLAN

SUITE 302  
1,349 SQ FT.



\*Not to scale

# 4730 WOODMAN AVENUE Sherman Oaks, CA

# Sherman Oaks Office Space For Lease



## LEASING INFORMATION

**JAY RUBIN**

Principal  
818.223.4385  
jrubin@lee-re.com  
BRE# 01320005

Website: [www.JayRubin-RE.com](http://www.JayRubin-RE.com)

**JENNIFER DONALDSON**

Principal  
818.933.0347  
jdonaldson@lee-re.com  
BRE# 01317737



Lee & Associates® - LA North/Ventura, Inc.  
Corporate ID #01191898  
A Member of the Lee & Associates®  
Group of Companies  
5707 Corsa Ave, Suite 200, Westlake Village, CA 91362  
P:818.223.4388 F:818.591.1450