

6800 Owensmouth Avenue
Warner Center | California

PRIME WARNER CENTER
OFFICE SPACE FOR LEASE



JAY RUBIN | jrubin@lee-re.com
Principal | JayRubin-RE.com
818.223.4385 | License ID# 01320005

EUGENE KIM | ekim@lee-re.com
Principal | License ID# 01521416
818.444.4919

 LEE &
ASSOCIATES
COMMERCIAL REAL ESTATE SERVICES
Corporate ID #01191898

PRIME WARNER CENTER OFFICE SPACE FOR LEASE | 6800 OWENSMOUTH AVENUE



PROPERTY DETAILS

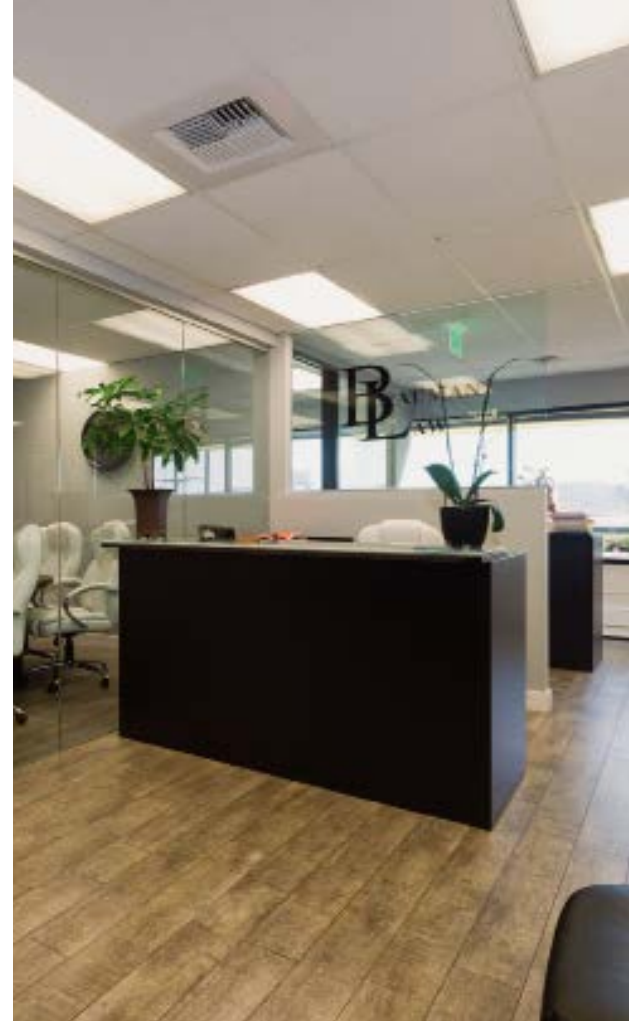
ADDRESS	6800 Owensmouth Avenue Warner Center, CA 91303
AVAILABILITY	Suite 100: 4,568 RSF* Suite 110: 1,485 RSF* Suite 150: 2,221 RSF Suite 200: 2,587 RSF Suite 295: 850 RSF Suite 320: 1,971 RSF Suite 370: 5,602 RSF * Suite 100 and 110 contiguous for 6,053 RSF
RENTAL RATE	\$2.05 per RSF
PARKING	3/1000 RSF

PROPERTY HIGHLIGHTS

- On-site cafe
- Fiber connection to the building
- AT&T and Spectrum available
- On-site facility manager
- Private balconies available on select suites
- Extraordinary window lines and views
- Convenient access to 101 and 118 Freeways
- Adjacent to the Westfield Topanga Mall, The Village at Westfield Topanga, and numerous other restaurants and retail amenities
- Walking distance to the LA Metro Orange Line

PRIME WARNER CENTER OFFICE SPACE FOR LEASE | 6800 OWENSMOUTH AVENUE

Photo Gallery



JAY RUBIN | jrubin@lee-re.com
Principal | JayRubin-RE.com
818.223.4385 | License ID# 01320005

EUGENE KIM | ekim@lee-re.com
Principal | License ID# 01521416
818.444.4919

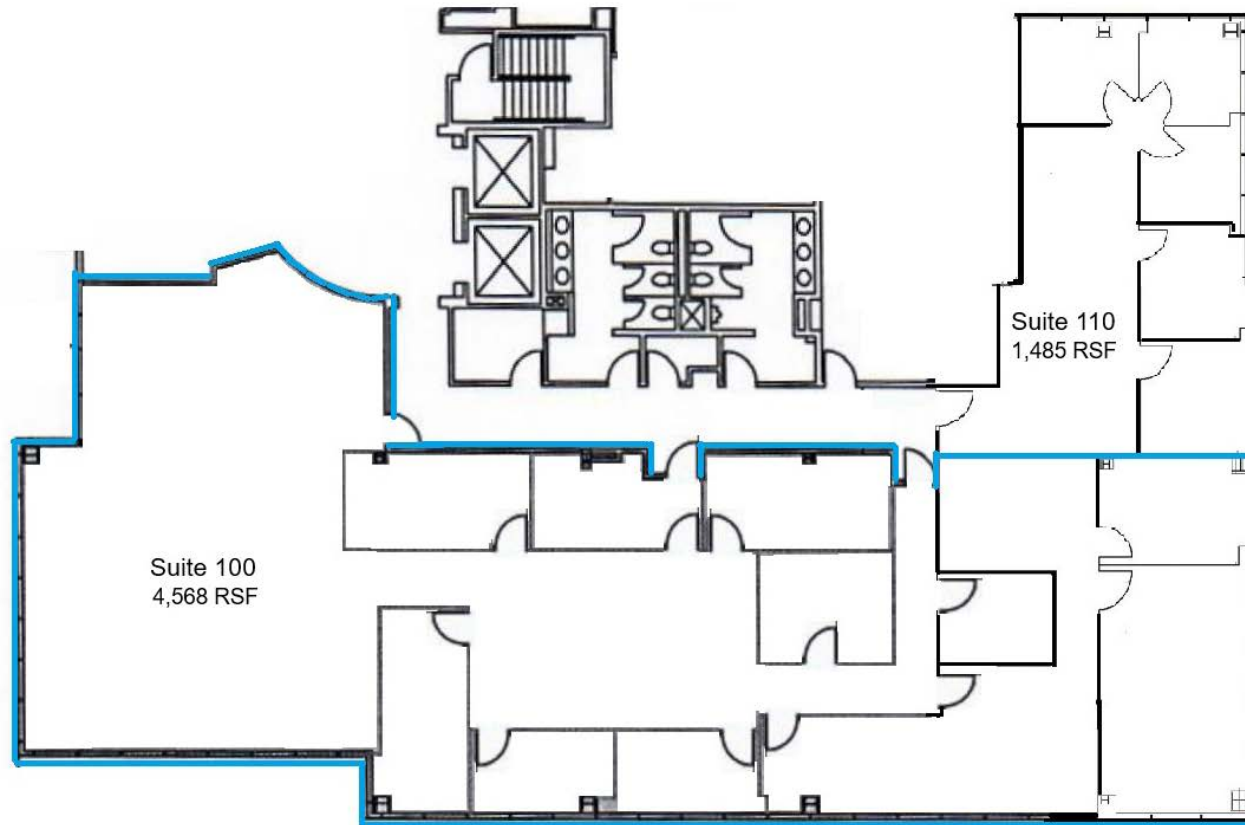


Lee & Associates® - LA North/Ventura, Inc. • Corporate ID #01191898
A Member of the Lee & Associates® Group of Companies
5707 Corsa Ave, Suite 200, Westlake Village, CA 91362
P:818.223.4388 F:818.591.1450

No warranty or representation is made to the accuracy of the foregoing information. Terms of sale or lease and availability are subject to change or withdrawal without notice.

PRIME WARNER CENTER OFFICE SPACE FOR LEASE | 6800 OWENSMOUTH AVENUE

Floorplan: Suite 100 & 110



*Not to scale

JAY RUBIN | jrubin@lee-re.com
Principal | JayRubin-RE.com
818.223.4385 | License ID# 01320005

EUGENE KIM | ekim@lee-re.com
Principal | License ID# 01521416
818.444.4919

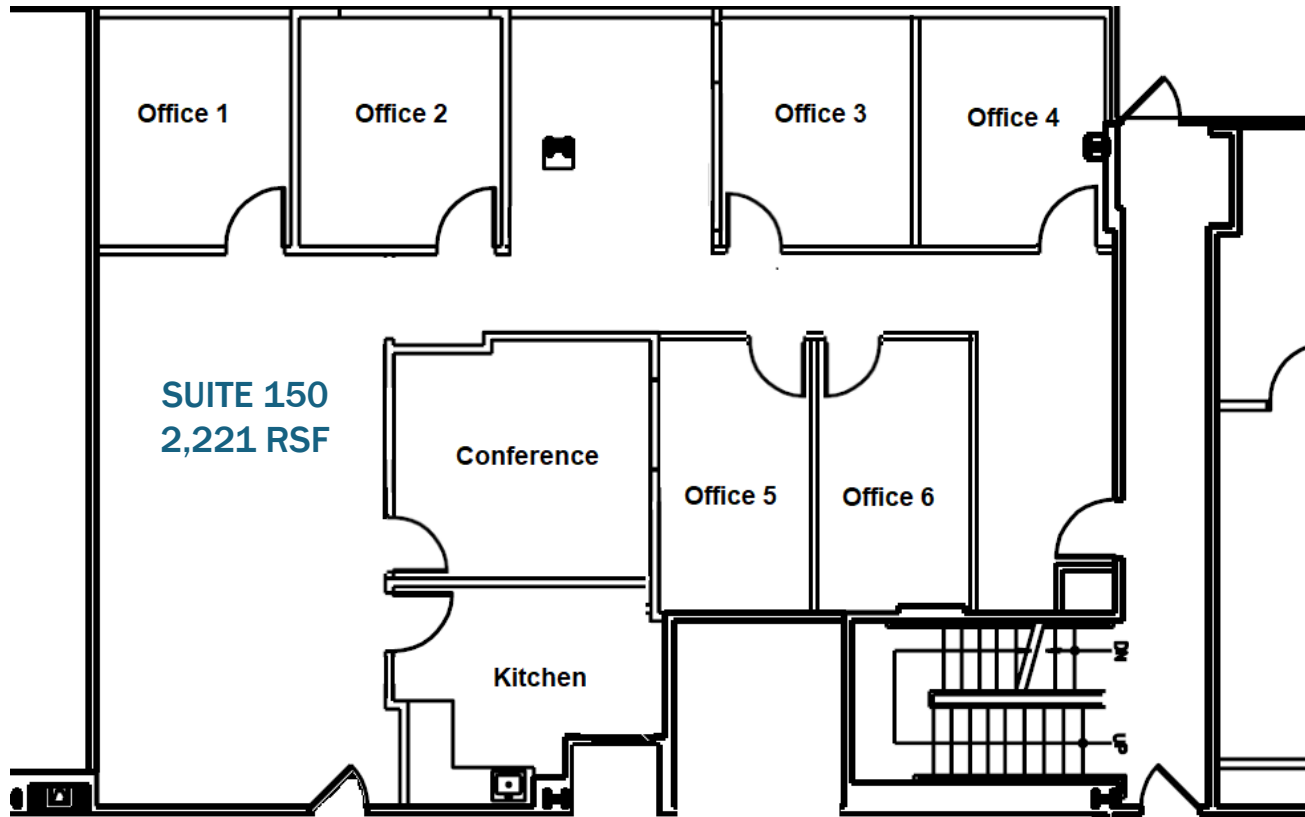


Lee & Associates® - LA North/Ventura, Inc. • Corporate ID #01191898
A Member of the Lee & Associates® Group of Companies
5707 Corsa Ave, Suite 200, Westlake Village, CA 91362
P:818.223.4388 F:818.591.1450

No warranty or representation is made to the accuracy of the foregoing information. Terms of sale or lease and availability are subject to change or withdrawal without notice.

PRIME WARNER CENTER OFFICE SPACE FOR LEASE | 6800 OWENSMOUTH AVENUE

Floorplan: Suite 150



*Not to scale

JAY RUBIN | jrubin@lee-re.com
Principal | JayRubin-RE.com
818.223.4385 | License ID# 01320005

EUGENE KIM | ekim@lee-re.com
Principal | License ID# 01521416
818.444.4919

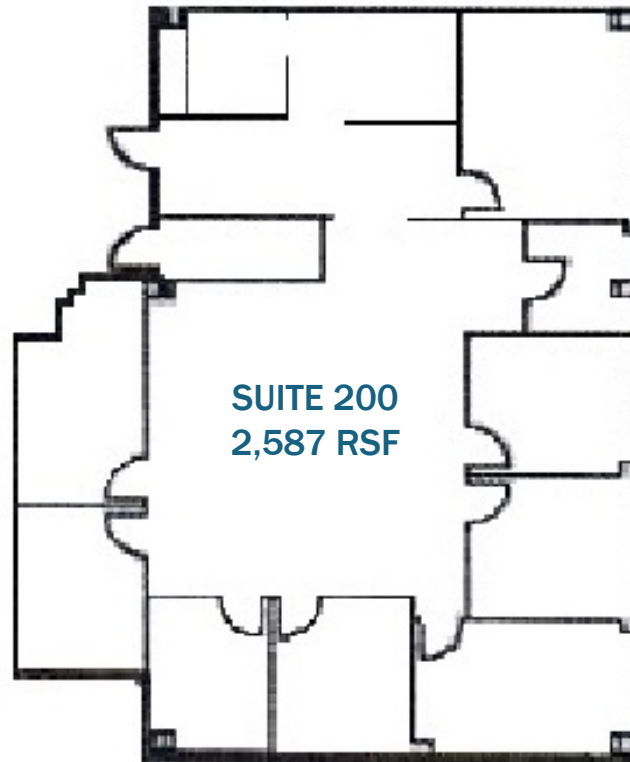


Lee & Associates® - LA North/Ventura, Inc. • Corporate ID #01191898
A Member of the Lee & Associates® Group of Companies
5707 Corsa Ave, Suite 200, Westlake Village, CA 91362
P:818.223.4388 F:818.591.1450

No warranty or representation is made to the accuracy of the foregoing information. Terms of sale or lease and availability are subject to change or withdrawal without notice.

PRIME WARNER CENTER OFFICE SPACE FOR LEASE | 6800 OWENSMOUTH AVENUE

Floorplan: Suite 200



*Not to scale

JAY RUBIN | jrubin@lee-re.com
Principal | JayRubin-RE.com
818.223.4385 | License ID# 01320005

EUGENE KIM | ekim@lee-re.com
Principal | License ID# 01521416
818.444.4919

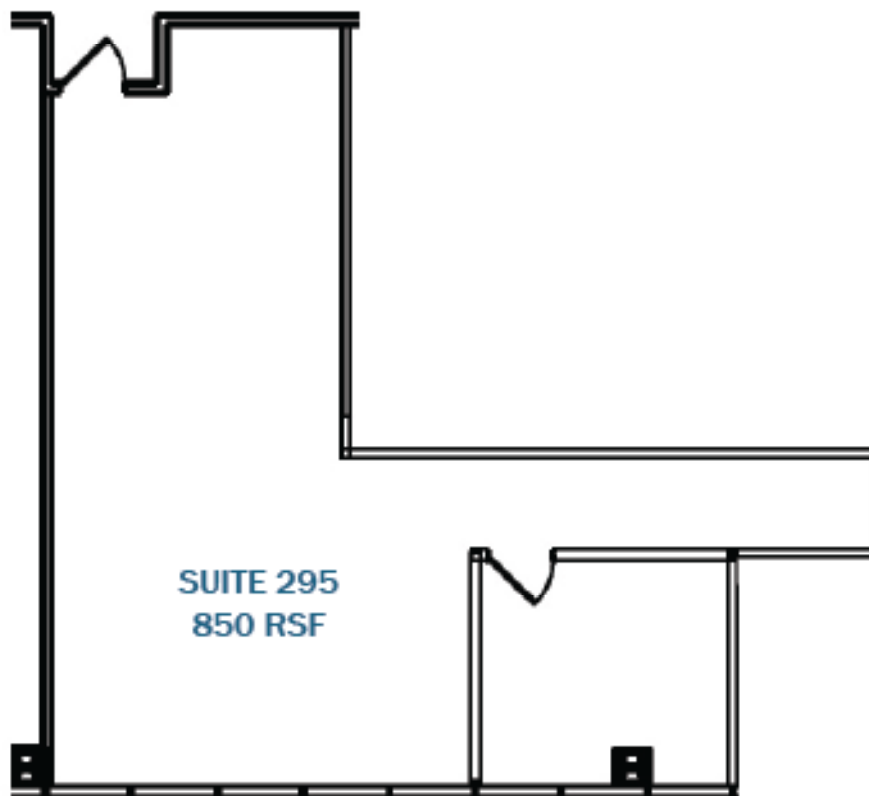


Lee & Associates® - LA North/Ventura, Inc. • Corporate ID #01191898
A Member of the Lee & Associates® Group of Companies
5707 Corsa Ave, Suite 200, Westlake Village, CA 91362
P:818.223.4388 F:818.591.1450

No warranty or representation is made to the accuracy of the foregoing information. Terms of sale or lease and availability are subject to change or withdrawal without notice.

PRIME WARNER CENTER OFFICE SPACE FOR LEASE | 6800 OWENSMOUTH AVENUE

Floorplan: Suite 295



JAY RUBIN | jrubin@lee-re.com
Principal | JayRubin-RE.com
License ID# 01320005

EUGENE KIM | ekim@lee-re.com
Principal | License ID# 01521416

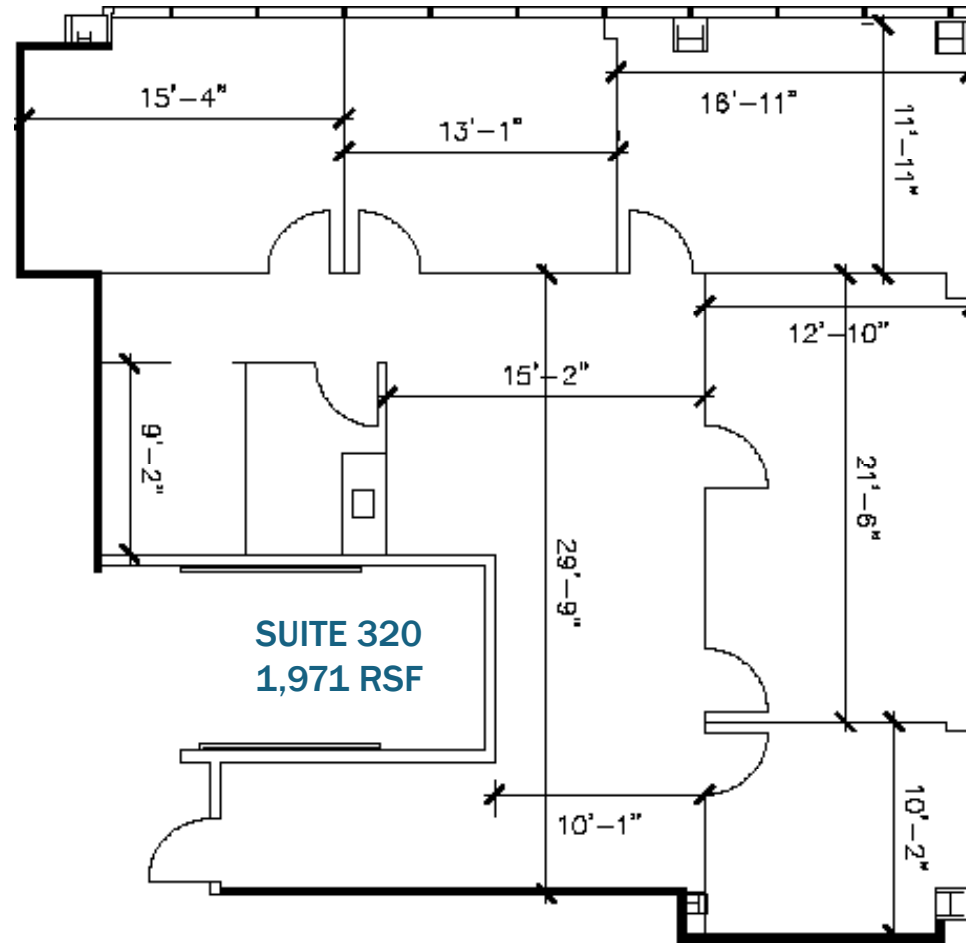


Lee & Associates® - LA North/Ventura, Inc. • Corporate ID #01191898
A Member of the Lee & Associates® Group of Companies
5707 Corsa Ave, Suite 200, Westlake Village, CA 91362
P:818.223.4388 F:818.591.1450

No warranty or representation is made to the accuracy of the foregoing information. Terms of sale or lease and availability are subject to change or withdrawal without notice.

PRIME WARNER CENTER OFFICE SPACE FOR LEASE | 6800 OWENSMOUTH AVENUE

Floorplan: Suite 320



*Not to scale

JAY RUBIN | jrubin@lee-re.com
Principal | JayRubin-RE.com
818.223.4385 | License ID# 01320005

EUGENE KIM | ekim@lee-re.com
Principal | License ID# 01521416
818.444.4919

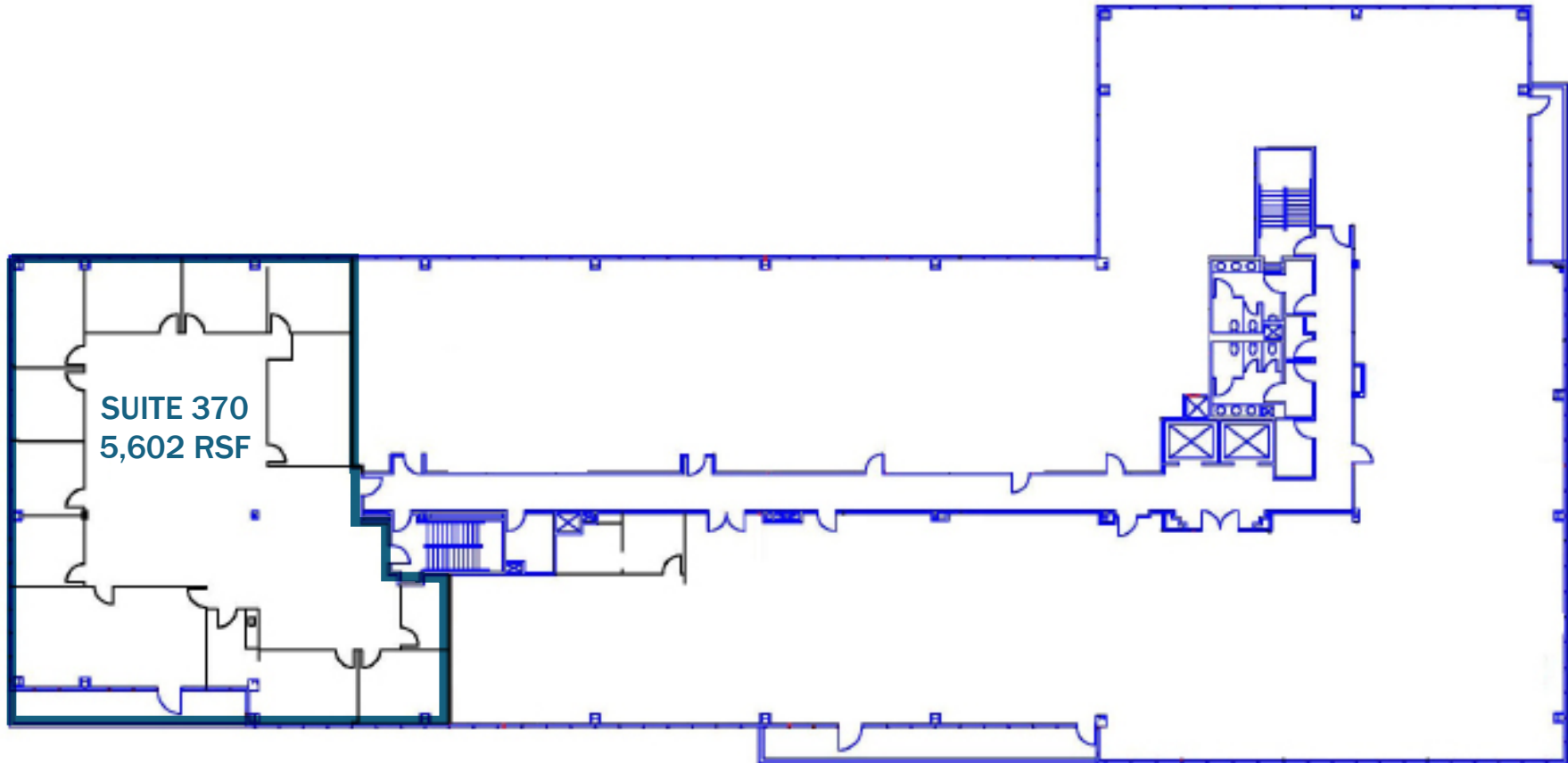


Lee & Associates® - LA North/Ventura, Inc. • Corporate ID #01191898
A Member of the Lee & Associates® Group of Companies
5707 Corsa Ave, Suite 200, Westlake Village, CA 91362
P:818.223.4388 F:818.591.1450

No warranty or representation is made to the accuracy of the foregoing information. Terms of sale or lease and availability are subject to change or withdrawal without notice.

PRIME WARNER CENTER OFFICE SPACE FOR LEASE | 6800 OWENSMOUTH AVENUE

Floorplan: 3rd Floor



*Not to scale

JAY RUBIN | jrubin@lee-re.com
Principal | JayRubin-RE.com
818.223.4385 | License ID# 01320005

EUGENE KIM | ekim@lee-re.com
Principal | License ID# 01521416
818.444.4919

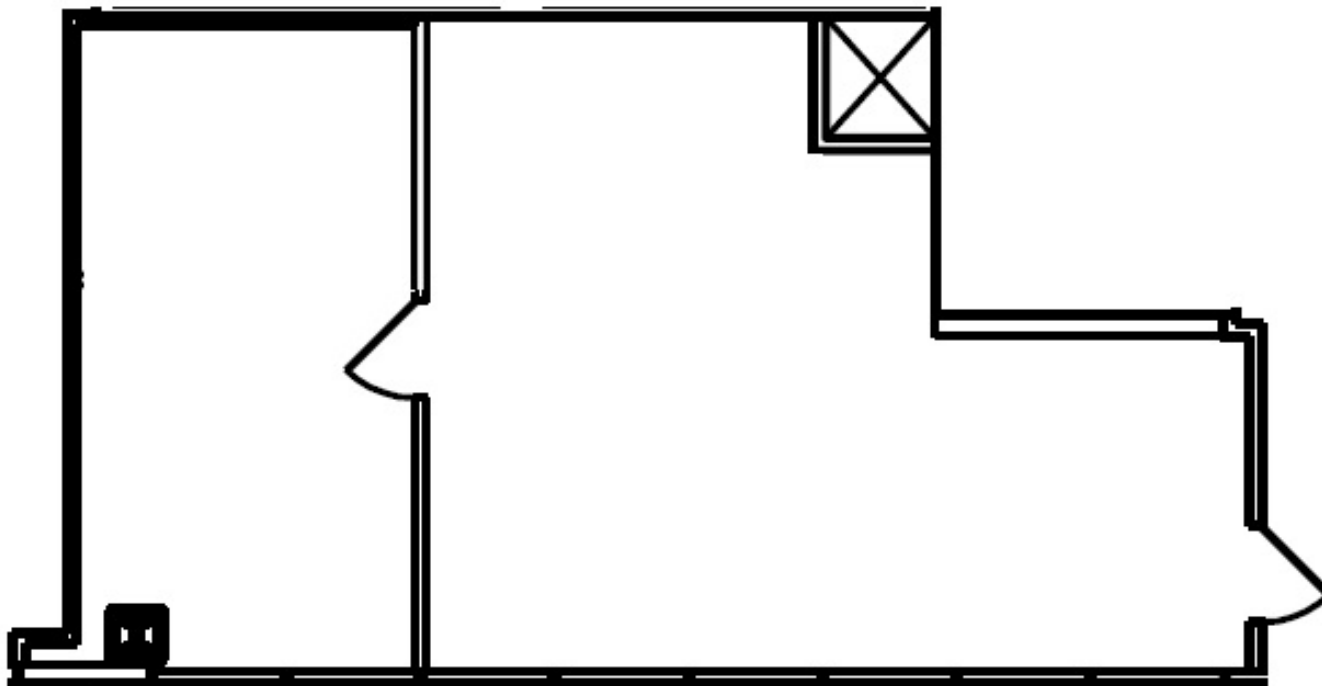


Lee & Associates® - LA North/Ventura, Inc. • Corporate ID #01191898
A Member of the Lee & Associates® Group of Companies
5707 Corsa Ave, Suite 200, Westlake Village, CA 91362
P:818.223.4388 F:818.591.1450

No warranty or representation is made to the accuracy of the foregoing information. Terms of sale or lease and availability are subject to change or withdrawal without notice.

PRIME WARNER CENTER OFFICE SPACE FOR LEASE | 6800 OWENSMOUTH AVENUE

Floorplan: Suite 440



*Not to scale

JAY RUBIN | jrubin@lee-re.com
Principal | JayRubin-RE.com
818.223.4385 | License ID# 01320005

EUGENE KIM | ekim@lee-re.com
Principal | License ID# 01521416
818.444.4919



Lee & Associates® - LA North/Ventura, Inc. • Corporate ID #01191898
A Member of the Lee & Associates® Group of Companies
5707 Corsa Ave, Suite 200, Westlake Village, CA 91362
P:818.223.4388 F:818.591.1450

No warranty or representation is made to the accuracy of the foregoing information. Terms of sale or lease and availability are subject to change or withdrawal without notice.