

22736 Vanowen St, West Hills



For more information please contact:

Jay Rubin

Principal

818.223.4385

jrubin@lee-re.com

License #01320005

Eugene Kim

Principal

818.444.4919

ekim@lee-re.com

License # 01521416



COMMERCIAL REAL ESTATE SERVICES

No warranty or representation is made to the accuracy of the foregoing information. Terms of sale or lease and availability are subject to change or withdrawal without notice.

Lee & Associates® - LA North/Ventura, Inc.

A Member of the Lee & Associates Group of Companies
5707 Corsa Ave, Suite 200, Westlake Village, CA 91362
www.lee-associates.com • Corp ID #01191898

22736 Vanowen St, West Hills, CA

AVAILABILITY

- Suite 100B | 1,870 RSF | \$1.50 FSG
- Suite 200 | 1,208 RSF | \$1.50 FSG
- Suite 300 | 5,096 RSF | \$2.25 FSG

RENTAL RATE

\$1.50 to \$2.25/RSF - Full Service

PARKING

2.7/1,000 SF
\$50/Month

FEATURES

- **Highly Improved Spec Suites Available**
- **Newly Renovated Common areas**
- **Walking Distance to amenities**
- **Generous Window Line**
- **Onsite Management**

For more information please contact:

Jay Rubin

Principal
818.223.4385
jrubin@lee-re.com
License #01320005

Eugene Kim

Principal
818.444.4919
ekim@lee-re.com
License # 01521416



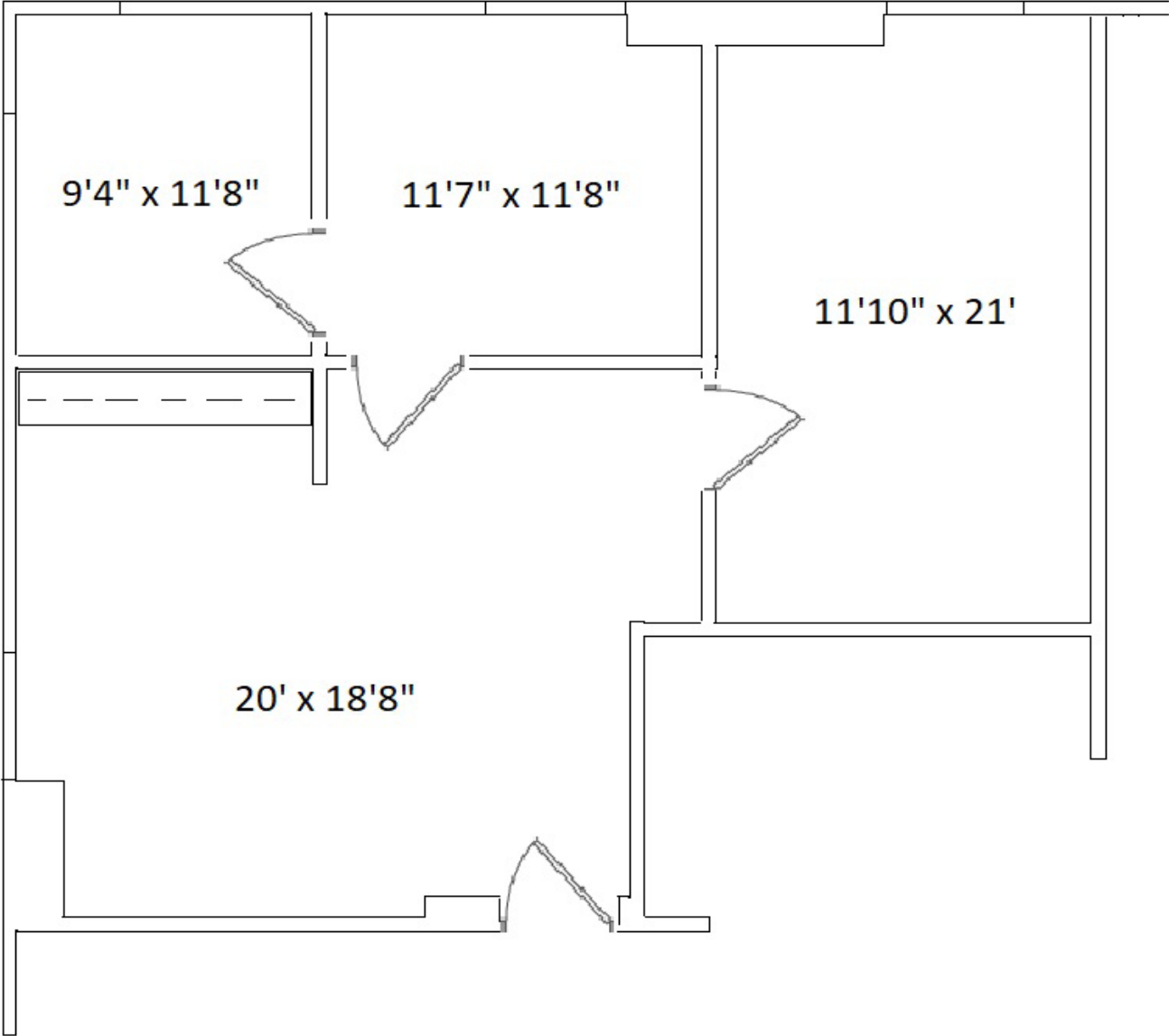
COMMERCIAL REAL ESTATE SERVICES

No warranty or representation is made to the accuracy of the foregoing information. Terms of sale or lease and availability are subject to change or withdrawal without notice.

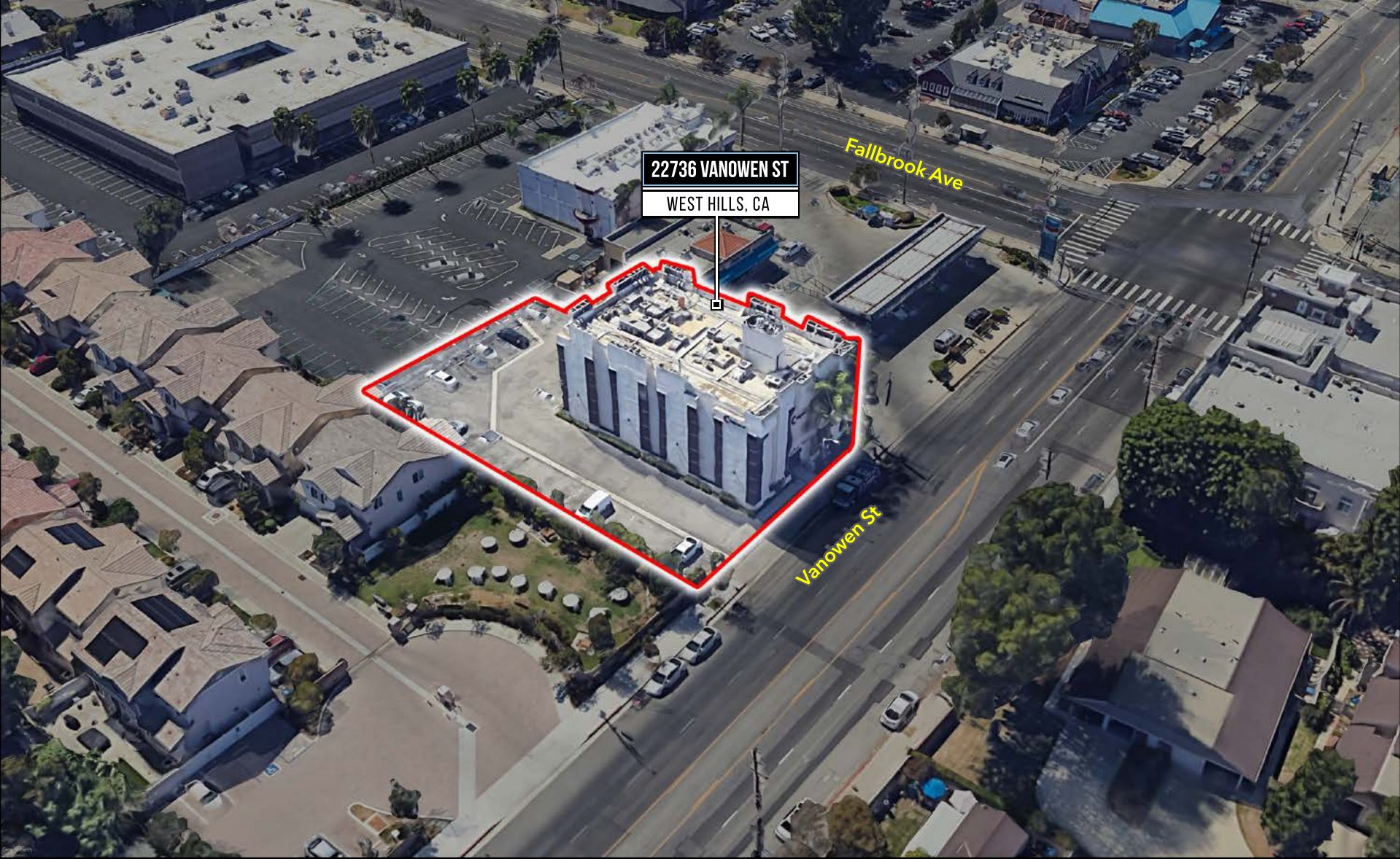


22736 Vanowen St, West Hills, CA

Suite 200 Floor Plan



22736 Vanowen St, West Hills, CA



22736 Vanowen St, West Hills, CA

