

4730 WOODMAN AVENUE
SHERMAN OAKS, CA

\$2/RSF Moving Allowance

LBPM

Sherman Oaks
Office Suites For Lease

JAY RUBIN
PRINCIPAL
818.223.4385
jrubin@lee-re.com
BRE# 01320005

JENNIFER DONALDSON
PRINCIPAL
818.933.0347
jdonaldson@lee-re.com

 LEE &
ASSOCIATES

Corporate ID #01191898
No warranty or representation is made to the accuracy of the foregoing information. Terms of sale or lease and availability are subject to change or withdrawal without notice.



PROPERTY DETAILS

Lease Rate: \$2.65 PRSF Full Service Gross

Parking: \$65 Per Car/Month

\$2/RSF Moving Allowance to New Incoming Tenants signing a Minimum 3-year Lease by April 30, 2025.

PROPERTY HIGHLIGHTS

- Modern Renovations
- Highly Improved Suites
- Easy Access to 405 & 101 Freeways
- Excellent Window Line
- On-Site Property Management
- Parking Attendant
- AT&T Fiber Available

LAST REMAINING AVAILABILITY

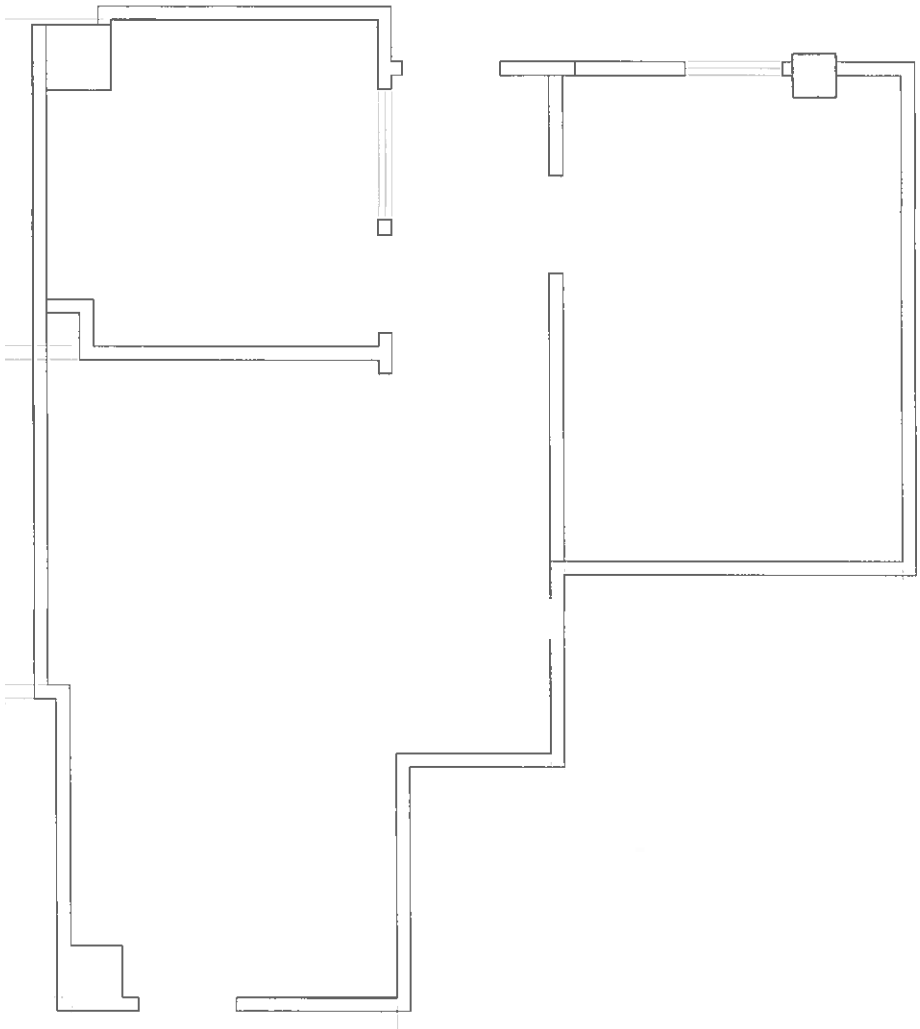
SUITE	SQ. FT.
205	698 RSF
375	2,403 RSF
415	928 RSF

4730 WOODMAN AVENUE
Sherman Oaks, CA

Sherman Oaks
Office Space For Lease

FLOORPLAN

SUITE 205
698 SQ FT.



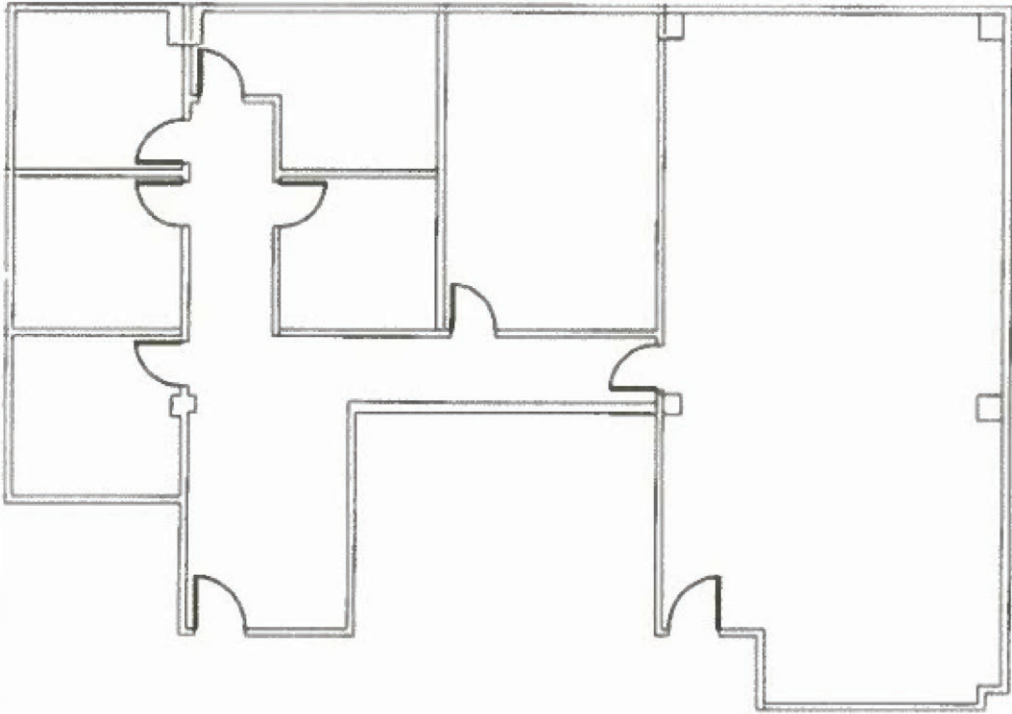
*Not to scale

4730 WOODMAN AVENUE
Sherman Oaks, CA

Sherman Oaks
Office Space For Lease

FLOORPLAN

SUITE 375
2,403 SQ FT.



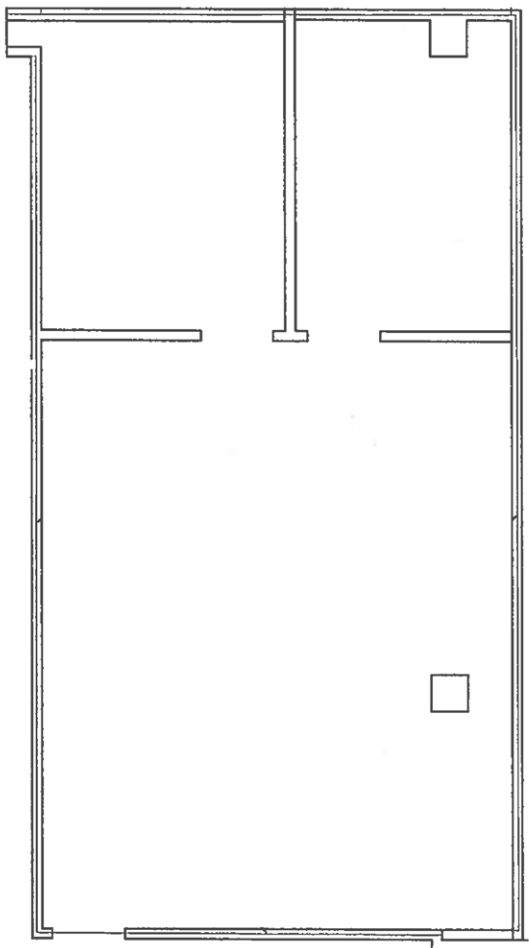
*Not to scale

4730 WOODMAN AVENUE
Sherman Oaks, CA

Sherman Oaks
Office Space For Lease

FLOORPLAN

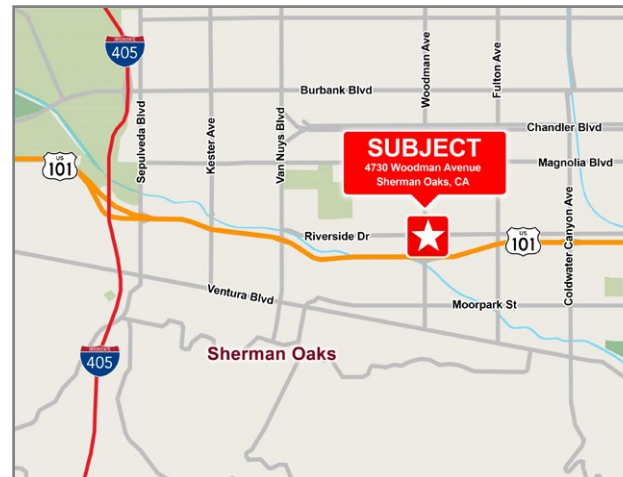
SUITE 415
928 SQ FT.



*Not to scale

4730 WOODMAN AVENUE Sherman Oaks, CA

Sherman Oaks Office Space For Lease



LEASING INFORMATION

JAY RUBIN

Principal
818.223.4385
jrubin@lee-re.com
BRE# 01320005

Website: www.JayRubin-RE.com

JENNIFER DONALDSON

Principal
818.933.0347
jdonaldson@lee-re.com
BRE# 01317737



Lee & Associates® - LA North/Ventura, Inc.
Corporate ID #01191898
A Member of the Lee & Associates®
Group of Companies
5707 Corsa Ave, Suite 200, Westlake Village, CA 91362
P:818.223.4388 F:818.591.1450