

32107-32133 Lindero Canyon Road, Westlake Village

The Landing



LAKESIDE OFFICE SUITES AVAILABLE FOR LEASE

Jay Rubin
Principal
818.223.4385
jrubin@lee-re.com
DRE# 01320005

Jared Smits
Principal
818.444.4986
jsmits@lee-re.com
DRE# 01839532

Eugene Kim
Principal
818.444.4919
ekim@lee-re.com
DRE# 01521416

 **LEE &
ASSOCIATES**
COMMERCIAL REAL ESTATE SERVICES

The Landing

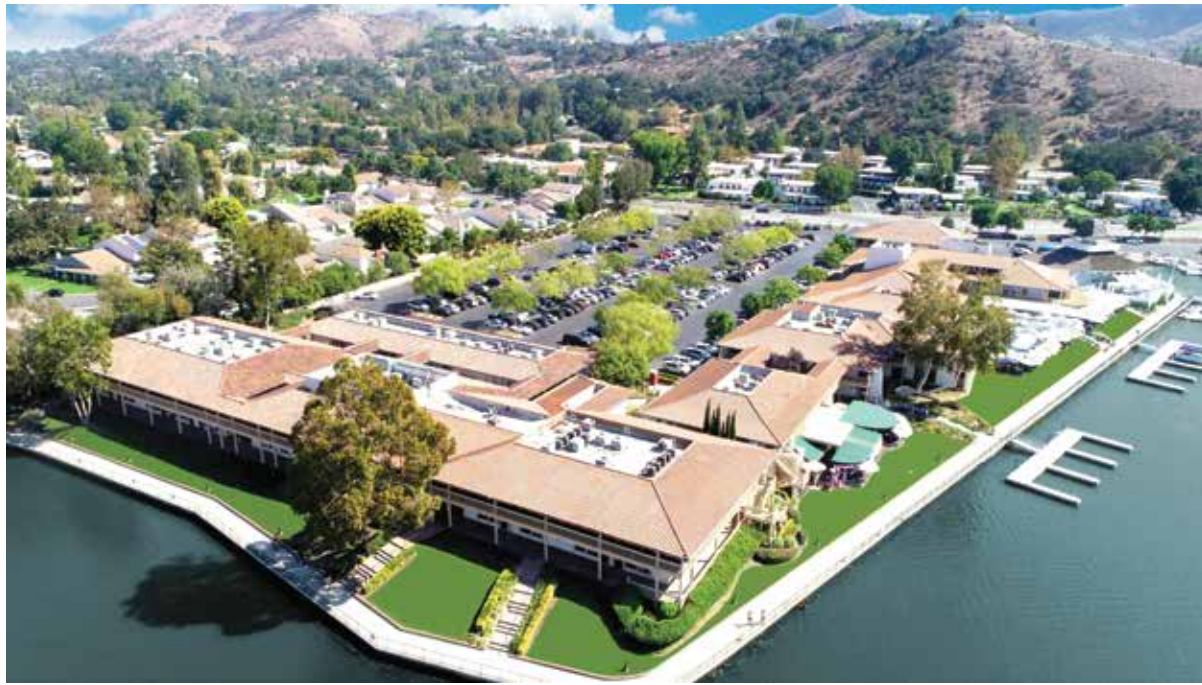
32107-32133 Lindero Canyon Road, Westlake Village

PROPERTY DETAILS

ADDRESS	31207-32133 Lindero Canyon Road Westlake Village, CA 91362
RENTAL RATE	\$2.60 - \$3.30 / RSF, Modified Gross Fixed CAM: \$0.12 / RSF Tenant responsible for janitorial
PARKING	3.9/1000 RSF Free Surface Parking

PROPERTY HIGHLIGHTS

- Charming Office and Retail Project along the shoreline of Westlake Lake
- Lakefront restaurants including Boccacio's, Zin Bistro, and The Landing Grill and Sushi Bar
- On-site Retailers, Building Management and Westlake Yacht Club
- Suites with stunning lake views
- Abundant 3.9/1000 SF of parking



Jay Rubin

Principal
818.223.4385
jrubin@lee-re.com
DRE# 01320005

Jared Smits

Principal
818.444.4986
jsmits@lee-re.com
DRE# 01839532

Eugene Kim

Principal
818.444.4919
ekim@lee-re.com
DRE# 01521416



Lee & Associates® LA North/Ventura, Inc.

5707 Corsa Ave., Ste 200 - Westlake Village, CA 91362 - Corp ID #01191898 - A Member of the Lee & Associates Group of Companies
No warranty or representation is made to the accuracy of the foregoing information. Terms of sale or lease and availability are subject to change or withdrawal without notice.

The Landing

32107-32133 Lindero Canyon Road, Westlake Village



AVAILABILITY SUMMARY

32133 Lindero Canyon Road

SUITE	SIZE	RATE	NOTES
220	1,043 SF	\$2.80	Spec Suite

Jay Rubin

Principal
818.223.4385
jrubin@lee-re.com
DRE# 01320005

Jared Smits

Principal
818.444.4986
jsmits@lee-re.com
DRE# 01839532

Eugene Kim

Principal
818.444.4919
ekim@lee-re.com
DRE# 01521416



COMMERCIAL REAL ESTATE SERVICES

Lee & Associates® LA North/Ventura, Inc.

5707 Corsa Ave., Ste 200 - Westlake Village, CA 91362 - Corp ID #01191898 - A Member of the Lee & Associates Group of Companies
No warranty or representation is made to the accuracy of the foregoing information. Terms of sale or lease and availability are subject to change or withdrawal without notice.

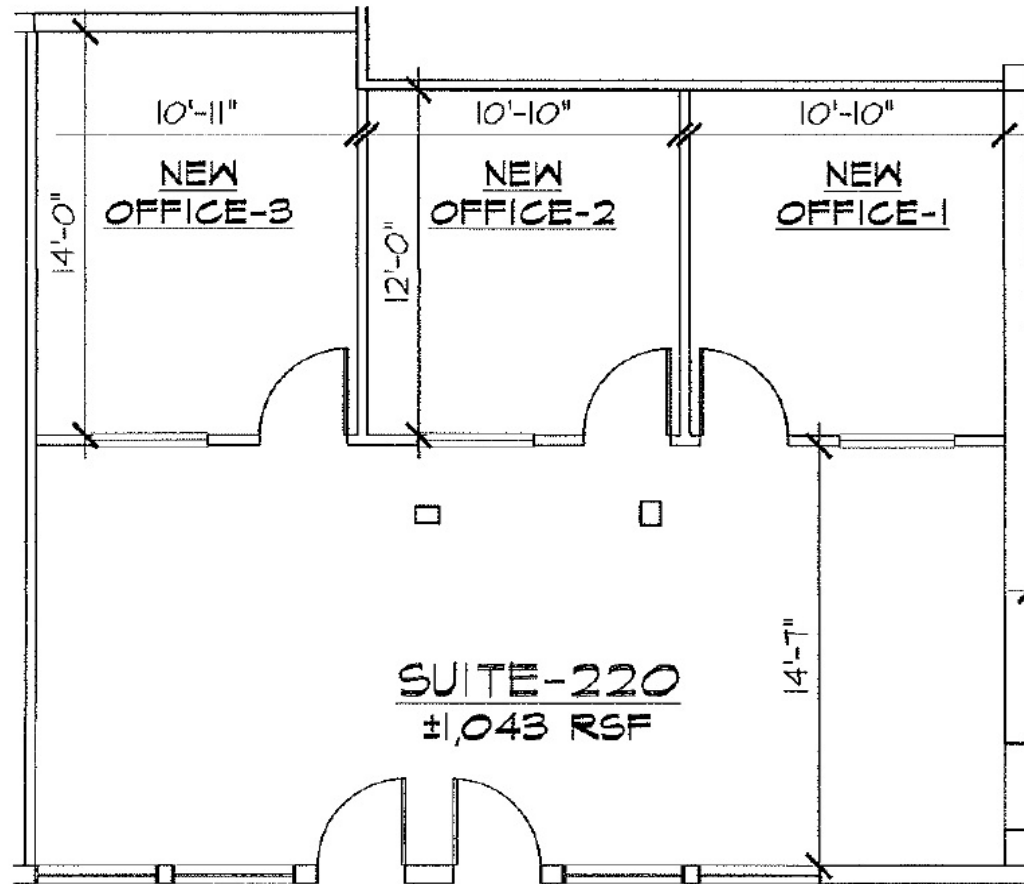
The Landing

32107-32133 Lindero Canyon Road, Westlake Village

32133
LINDERO
CANYON ROAD

Suite 220
1,043 SF \$2.80

Move-in Ready Spec Suite



SUITE
220

Jay Rubin
Principal
818.223.4385
jrubin@lee-re.com
DRE# 01320005

Jared Smits
Principal
818.444.4986
jsmits@lee-re.com
DRE# 01839532

Eugene Kim
Principal
818.444.4919
ekim@lee-re.com
DRE# 01521416

 **LEE &
ASSOCIATES**
COMMERCIAL REAL ESTATE SERVICES

The Landing

32107-32133 Lindero Canyon Road, Westlake Village



Jay Rubin

Principal
818.223.4385
jrubin@lee-re.com
DRE# 01320005

Jared Smits

Principal
818.444.4986
jsmits@lee-re.com
DRE# 01839532

Eugene Kim

Principal
818.444.4919
ekim@lee-re.com
DRE# 01521416

Lee & Associates® LA North/Ventura, Inc.

5707 Corsa Ave., Ste 200 - Westlake Village, CA 91362 - Corp ID #01191898 - A Member of the Lee & Associates Group of Companies
No warranty or representation is made to the accuracy of the foregoing information. Terms of sale or lease and availability are subject to change or withdrawal without notice.

 **LEE &
ASSOCIATES**
COMMERCIAL REAL ESTATE SERVICES

The Landing

32107-32133 Lindero Canyon Road, Westlake Village



THE LANDING
32107-32133 Lindero Canyon Rd.
Westlake Village, CA



SHOPPING & FINE DINING

1. North Ranch Mall
2. The Promenade
3. Costco
4. Shoppes @ Westlake
5. Westlake Plaza
6. The Landing



ATHLETIC CLUB/SPA

7. Bay Club
8. Equinox
9. Calif. Longevity & Health Institute



GOLF COURSE

10. Westlake Village Golf Course
11. North Ranch Country Club
12. Sherwood Lake Club



HOTEL

13. Four Seasons
14. Westlake Village Inn
15. Westlake Hyatt



SCHOOLS

16. Westlake High School
17. Oaks Christian



YACHT CLUB

18. Westlake Village Yacht Club



SUBJECT PROPERTY
The Landing, 32107-32133 Lindero Canyon Rd.
Westlake Village, CA

LIVE.WORK.PLAY.

Jay Rubin

Principal
818.223.4385
jrubin@lee-re.com
DRE# 01320005

Jared Smits

Principal
818.444.4986
jsmits@lee-re.com
DRE# 01839532

Eugene Kim

Principal
818.444.4919
ekim@lee-re.com
DRE# 01521416

LEE & ASSOCIATES

COMMERCIAL REAL ESTATE SERVICES

Lee & Associates® LA North/Ventura, Inc.

5707 Corsa Ave., Ste 200 - Westlake Village, CA 91362 - Corp ID #01191898 - A Member of the Lee & Associates Group of Companies
No warranty or representation is made to the accuracy of the foregoing information. Terms of sale or lease and availability are subject to change or withdrawal without notice.